



AS OF MARCH 2021

Building Accessibility 38 St Marks Pl

THROUGHOUT BUILDING

There are handrails on both sides of all stairs at 33.5" H.

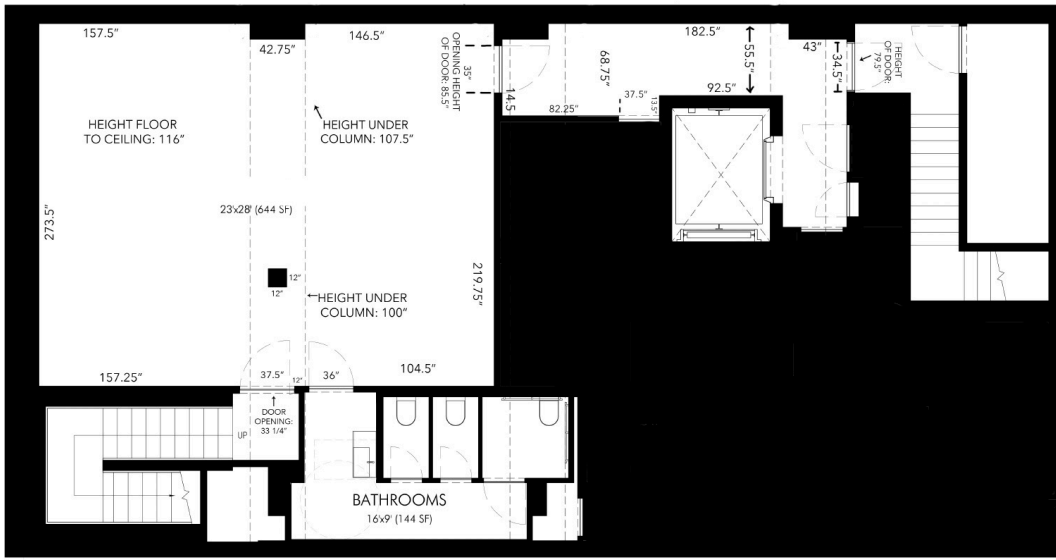
There is safety and way-finding signage in English and Braille.

All floors including Roof Terrace have elevator access.

The following dimensions and pathways are subject to change during exhibitions but will always remain ADA accessible.

For any questions and to receive exhibition specific details, please email Lou Neyland (lou@swissinstitute.net).

LOWER LEVEL



There are 18 stairs from the Ground Floor to the Lower Level in the front stairwell. They are each 7" H x 38" W.

There are 14 stairs from the Ground Floor to the Lower Level in the back stairwell. They are each 8" H x 35" W.

There is 1 door into the gallery from the front staircase and 1 door from the back entrance/elevator hallway.

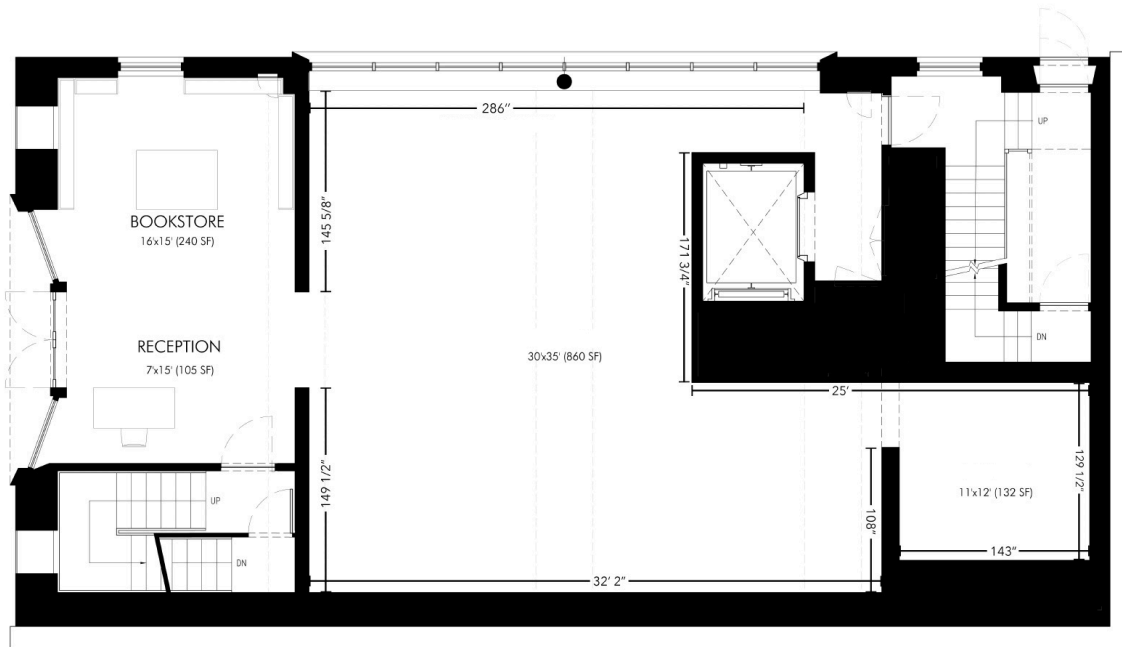
The doorway from the gallery to front stairwell is 33 1/4" W.

The restroom door is 36" W and pulls into the gallery to open.

The restroom sink is 36" H.

The restroom contains 3 stalls, including 1 ADA stall with a baby changing station. There are handrails on 2 walls at 36" H. Each stall is 61.5" x 65.5".

GROUND FLOOR



There are double doors at the front entrance to the building, which are each 35.5" W. They have vertical pull bar handles that start at 19" from the ground. There is a push bar handle to exit from the inside at 38" H.

The entrance to the gallery from the Lobby does not have a door. It is 74" W.

All interior doors have handles at 36" H from the floor.

The hallway to the elevator is 41.5" W.

The elevator doors are 42" W.

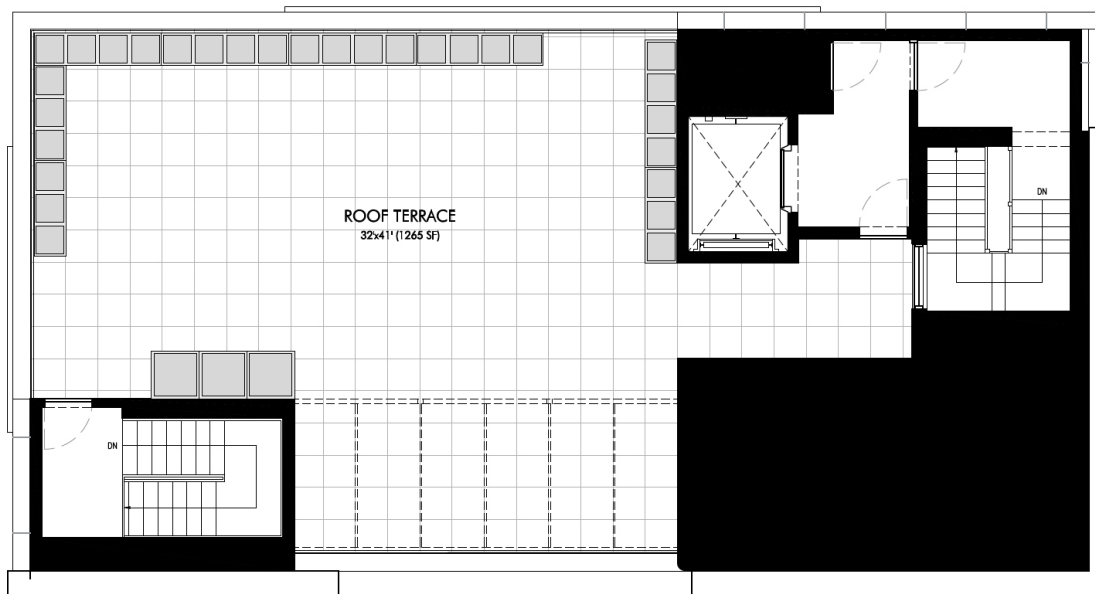
There is 1 door from the Lobby to the front stairwell. It is 34" W and usually kept open.

There are 2 doors to the Lower Level from the front stairwell, each is 31.5" W.

There is 1 door to the back stairwell. It is 33" W and must be pushed to exit.

The Emergency Exit is 34.5" W with a push bar to exit at 46.5" H. There are 3 stairs down to the Emergency Exit. Each stair is 5" H x 42" W.

ROOF TERRACE



There are 24 stairs from the 2nd Floor to the Roof Level in the front stairwell. There is 1 door to the Roof Terrace that is 33" W with a push bar to exit.

There are 22 stairs from the 2nd Floor to the Roof Level in the back stairwell. There are 2 doors to the Roof Terrace, each 33" W, with a small lip on the threshold going out to the roof.