

SI

Contemporary Art Daily

CONTEMPORARYARTDAILY.COM
SI OFFSITE | ON HALF A TANK OF GAS
November 6th, 2017

‘On Half a Tank of Gas’ at various locations



Artists: Olga Balema, Lorenzo Bernet, Sarah Burger, Valentin Carron, Christina Forrer, Simon Fujiwara, Bradley Kronz, Miriam Laura Leonardi, Paul McCarthy & Mike Kelley, Gianni Motti, Selina Grüter & Michèle Graf, Yannic Joray & Daniel Horn, Chadwick Rantanen, Elda Schiesser, Roman Signer, Shirin Yousefi

Venues: Various locations in New Glarus, United States (Citizens Banks Building, Chalet of the Golden Fleece Museum, Puempel's Olde Tavern, SwissLand Miniature Golf, and the New Glarus Village Park)

Exhibition Title: On Half a Tank of Gas

Organized by: Swiss Institute, New York and Kunsthaus Glarus

Date: October 13 – 15, 2017

Note: A publication by Sarah Burger associated with the exhibition is available for download [here](#).

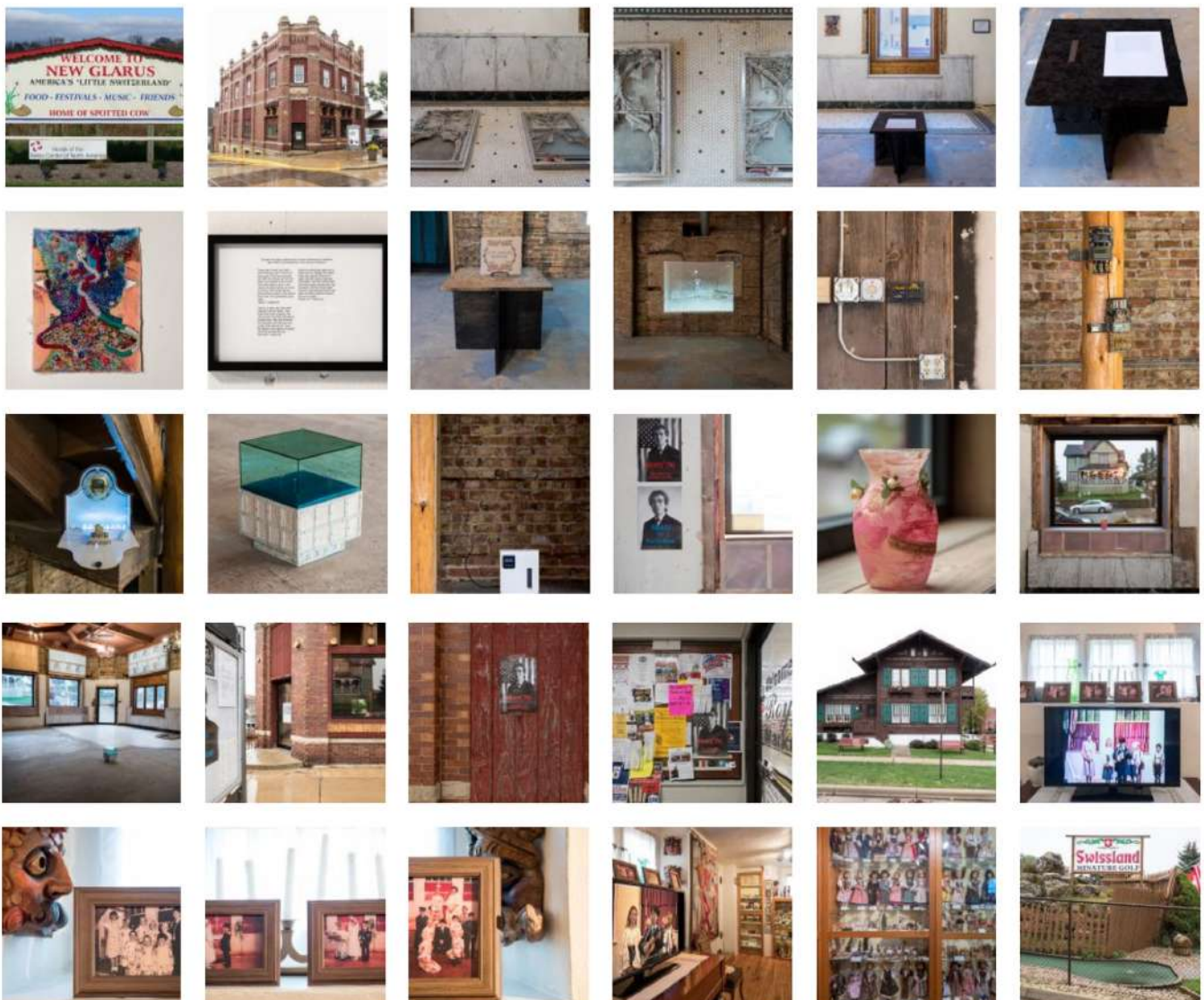
[Click here to view slideshow](#)

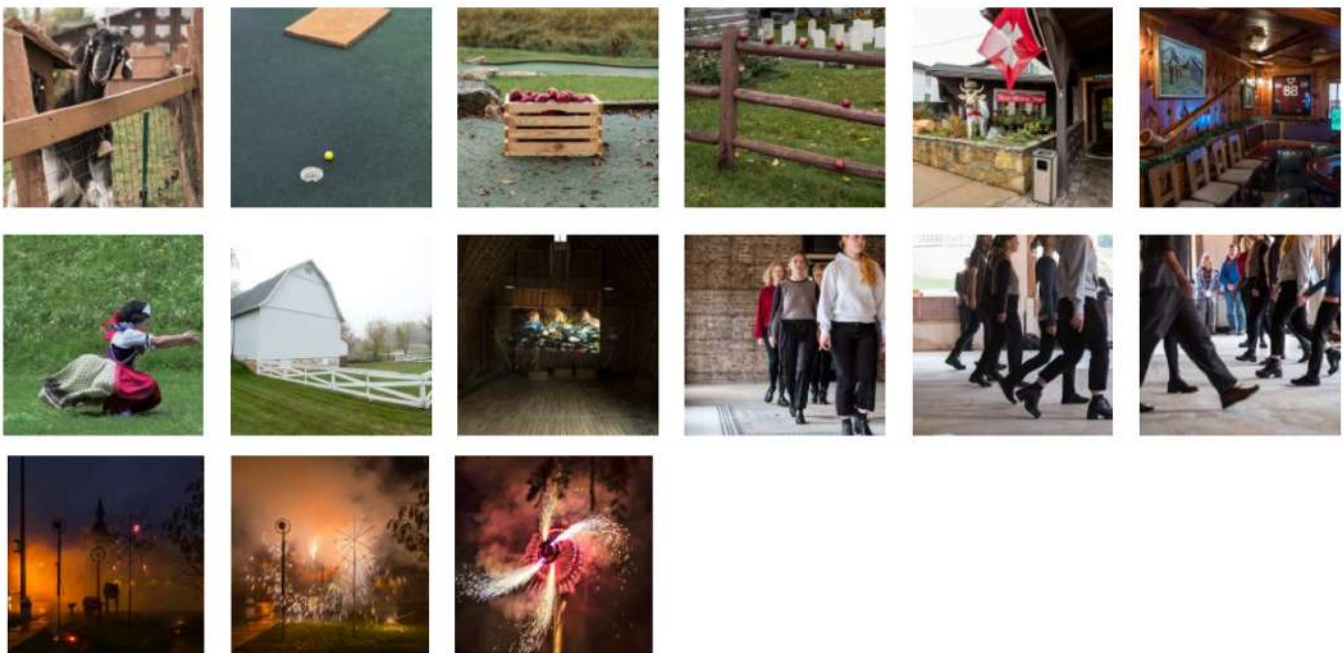




Lorenzo Bernet, documentation of *Krating Daeng* กระทิงแดง, 2017, Mechanized ground fireworks at the New Glarus Village Park
 Full gallery of images, press release and link available after the jump.

Images:





Images courtesy of Swiss Institute, New York and Kunsthau Glarus

Press Release:

Swiss Institute and Kunsthau Glarus are thrilled to present a village-wide project that will take place in New Glarus, Wisconsin. Self-described as “America’s Little Switzerland,” New Glarus is a rural town where a group of economic migrants from Glarus, Switzerland, moved in the mid-nineteenth century, fleeing deteriorating economic conditions at home.

With its title taken from a flyer for a local business advertising that one can “Visit Switzerland...On Half a Tank of Gas!”, the project explores New Glarus as an unusual place of cultural crossover between America and Switzerland. The particular history and culture of the village is the central point of departure for the project, which explores migration, economic development, and the heritage and tourism industries that preserve and market a sense of place. Swiss Institute and Kunsthau Glarus have invited contributions from a number of artists from Switzerland, Wisconsin and elsewhere, who have approached such histories through material concerns, ranging from hunting equipment and tapestries to fragrances and fireworks.

Link: “On Half a Tank of Gas” at various locations

Tags: Bradley Kronz, Chadwick Rantanen, Christina Forrer, Citizens Banks Building; Chalet of the Golden Fleece Museum; Puempel’s Olde Tavern; SwissLand Miniature Golf; and the New Glarus Village Park, Elda Schiesser, Gianni Motti, Group Show, Kunsthau Glarus, Lorenzo Bernet, Miriam Laura Leonardi, New Glarus, Olga Balema, Paul McCarthy & Mike Kelley, Roman Signer, Sarah Burger, Selina Grüter & Michèle Graf, Shirin Yousefi, Simon Fujiwara, Swiss Institute, United States, Valentin Carron, Yannic Joray & Daniel Horn

Share: [Twitter](#), [Facebook](#), [Pinterest](#)

2008 – 2017 Contemporary Art Daily
with help from [Ivan Dal Cin](#)